

- A Natural Fit -
JRM Technologies integrates high-fidelity physics-based sensor simulation with Sensics zSight SXGA Head Mounted Display



Seen at JRM Booth #713



JRM Products feature:

- 30-60 Hz man-in-the-loop (MITL) NVG, FLIR and visible “out-the-window” training simulators.
- 60-400 Hz HWIL IR stimulators and associated resistor-array/projector control/interfaces on state-of-the-art hardware platforms.
- Correlated multispectral (EO/IR/RF) sensor suite simulations.
- Full hyperspectral sensor simulations.
- Engineering-level NVG/FLIR sensor effects simulations and real-time simulators.
- High-entity-count correlated-virtual and constructive simulation for MITL vs computer-generated forces (CGF) exercises.
- Semi-automated algorithms for material classification of remotely-sensed imagery.

Sensics offers

A Wide Range of Defense-Focused Products

- Helmet-mounted displays
- Injected video simulators
- Semi-custom solutions
- OEM components

Visit Sensics at Booth #1066



JRM Products

JRM is committed to providing our customers world class products and services, with product lines designed specifically to meet the needs of the following end-user areas:

- **Products for Modeling and Simulation Developers:** JRM offers a comprehensive tool set for developing arbitrary constructive or virtual sensor solutions.
- **Products for Testing and Laboratory Environments:** JRM offers products and services for Laboratory and Field Testing environments, including HWIL Sensor Scene Generation and Stimulation.
- **Partner Integration Solutions:** JRM teams with key players in the M&S community to add realistic sensor simulation to their IG product lines and provide turn-key solutions.

OSV™

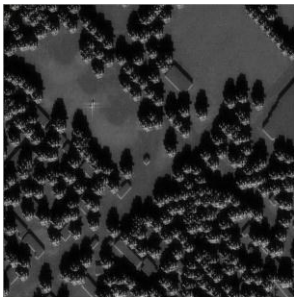
Advanced Spectral Scene Generator

OSV™ is an advanced, physics-based spectral scene generation software package. Its highly realistic image output is ideal for advanced training system applications and tactical sensor studies.



Material Library

JRM's Material Library provides surface optical, thermo-physical and EM material property data



GenesisMC™

GUI-based Semi-automated Image Material Classifier

Genesis is an advanced-algorithm software tool for creating materially-classified-maps from remote-sensed terrain imagery or RGB-textured 3D models -- complete with physical properties and boundary conditions for realistic physics-based sensor simulations.

SigSim™

Signature & Atmospheric Library for Sensors & Out-the-Window Visuals

SigSimRT is an advanced signature synthesis and atmospheric propagation runtime library for radiometrically-correct sensor displays and Out-the-Window (OTW) visuals.



SenSim™

Advanced EO/IR Sensor SDK & Real-Time Effects Library

SenSimRT is an advanced sensor modeling toolkit and run-time library for real-time sensor effects simulation of any optical sensor in the EO or IR passband. It provides engineering-level modeling of the optics, detector, electronics and display components.

Chimaera™

Hardware-in-the-Loop (HWIL) Image Generator

JRM's high-end, complete 60-400 Hz HWIL Multi-spectral EO/IR Scene Stimulation System, with support for IR Scene Projectors, Digital Injection I/O Box, Genlock sync-capability, Virtual Memory Interface, Host Interface Controller, super-sampled targets, and database-paging.

For more information contact:

Karl Leodler
karl.leodler@jrmtech.com
540-498-7770



JRM Technologies

1127 International Parkway Suite 115
Fredericksburg, VA 22406
540-752-2525
www.jrmtech.com